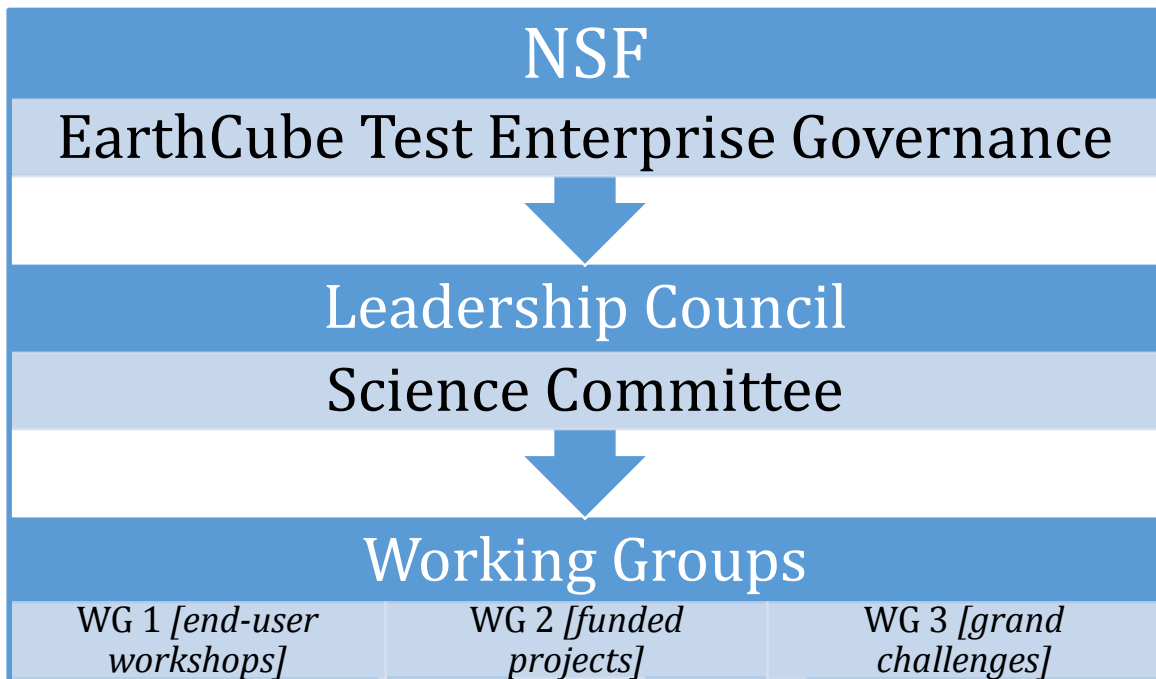
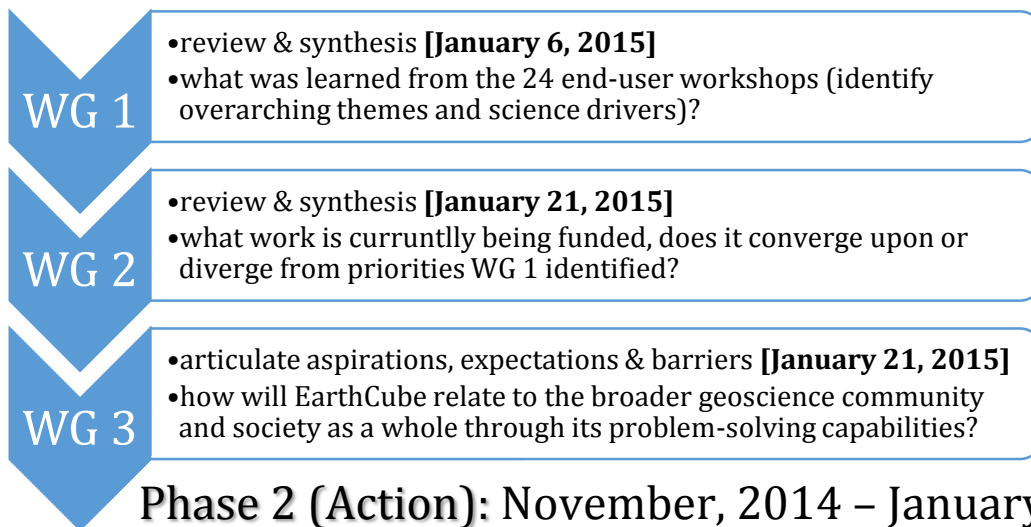


# EarthCube Strategic Science Plan Roadmap



**Phase 1 (Charge):** June – October, 2014

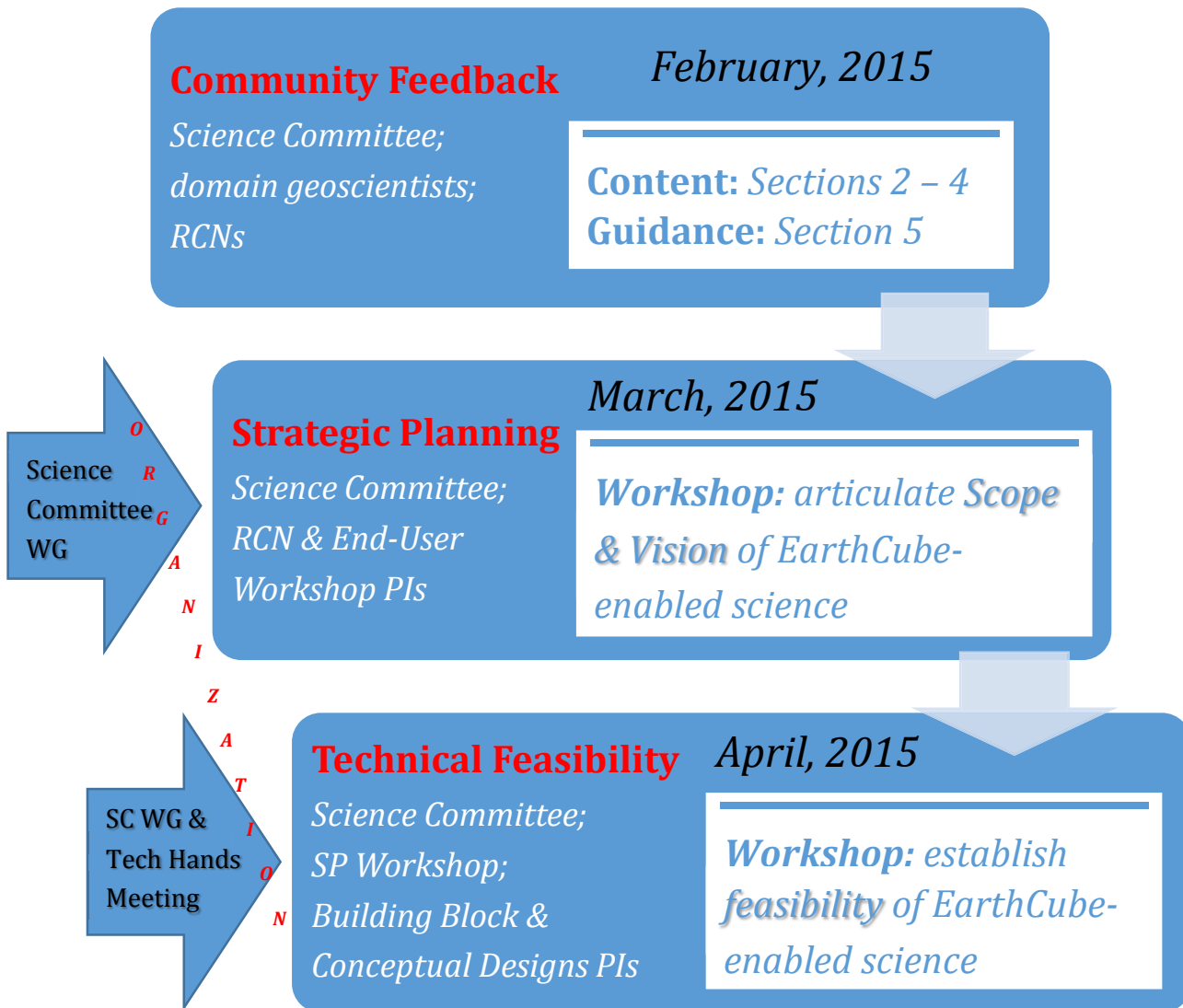


**Phase 2 (Action):** November, 2014 – January, 2015

## EarthCube Strategic Science Plan

Draft: **January 26, 2015**

## Phase 3 (Refinement): February – July, 2105



The Science Committee will submit a **final draft** of the EarthCube Strategic Science Plan to the Leadership Council on **May 1, 2015**, who will forward it to the All-Hands Meeting for discussion. The Leadership Council will solicit community feedback on the final draft in **June, 2015**, prior to **approving the document** and forwarding it to the National Science Foundation in **August, 2015**.